



ARCHITECTURE+OBJECTS
+INSTALLATIONS

CONCEPT DESIGN
ILLUMINATE ADELAIDE
OUCHHH PUBLIC ARTWORK

JUNE 2022 - V3

Skein practice on Kurna Land and we acknowledge the Kurna people as the traditional custodians of the Adelaide Plains area where we live and work and we respect their spiritual relationship with Country.

Wauwi, named to commemorate the wife of Kadlitpinna. Wauwe means female Kangaroo.

Curatorial Statement

Illuminate Adelaide is a major event of curated activity focused on the intersection of art and technology and Ouchhh Studio are a company at the forefront of development in this area.

Ouchhh Studio are international leaders in the creation of artworks and immersive experiences. The studio utilises artificial intelligence to analyse comprehensive data from various sources to make meaningful artistic expressions.

By asking the question: 'can humans and machines collaborate to make art?', Ouchhh Studio are pushing the boundaries of new technology to create art experiences that are completely unique and that represent the future-facing thematic of Illuminate Adelaide.

TABLE OF CONTENTS

<i>Project Introduction</i>	<i>Page 5</i>
<i>Site Rationale</i>	<i>Page 6</i>
<i>Planning Zones + Overlays</i>	<i>Page 7</i>
<i>Adelaide Context</i>	<i>Page 8</i>
<i>Site Analysis</i>	<i>Page 9</i>
<i>Location Plan</i>	<i>Page 10</i>
<i>Artist Introduction</i>	<i>Page 11</i>
<i>Artist's Concept for the Artwork</i>	<i>Page 12</i>
<i>Conceptual View - South Approach</i>	<i>Page 13</i>
<i>Conceptual View - North Approach</i>	<i>Page 14</i>
<i>Materials + Finishes</i>	<i>Page 15</i>
<i>Site Works Plan</i>	<i>Page 16</i>
<i>Site Plan</i>	<i>Page 17</i>
<i>Elevations</i>	<i>Page 18</i>
<i>Sections</i>	<i>Page 19</i>
<i>Risk Assessment</i>	<i>Page 20 - Page 21</i>
<i>Reference Documents</i>	<i>Page 22 - Page 23</i>
<i>Project Timeline</i>	<i>Page 24</i>

PROJECT INTRODUCTION

ILLUMINATE ADELAIDE OUCHHH PUBLIC ARTWORK, WAUWI / LIGHT SQUARE

Ouchhh Studio and Illuminate Adelaide, in partnership with The City of Adelaide, have assembled a design team to assist with the design and delivery of the proposed Illuminate Adelaide Ouchhh public artwork, to be installed as part of Illuminate Adelaide's 2023 calendar of events.

Adelaide based architecture studio Skein are currently engaged by Illuminate Adelaide to provide the Concept Design for the project that will determine the feasibility, key design considerations, project team structure, project timeline, and an opinion of probable costs for the delivery of the Illuminate Adelaide Ouchhh public artwork.

The initial Concept Design, as part of the project scoping phase, includes the following and is provided to the City of Adelaide for internal review and comment:

- A site plan integrating a site survey, service runs and services locations (data provided by City of Adelaide and other third parties consultants) to test the viability of the project in the nominated location.
- A Concept Design for the sculptural form and art work that will house the artist's digital screens, sufficient for design review by Illuminate Adelaide, the City of Adelaide, and Ouchhh Studio. The design will explore appropriate positioning on site, art work size and scale, best-practice construction systems and material selections, the connection of the art work to the ground and required base/plinth structure, and public safety.
- A Concept Design documentation set sufficient to obtain fee proposals from relevant secondary consultants including geotechnical, civil, structural, and services engineers.
- A Concept Design package for use by Illuminate Adelaide and the City of Adelaide to obtain the required application approvals for the project.
- Two high-level cost estimates by a quantity surveyor, based on the Concept Design and subsequent Construction Documentation, as well as technical data supplied by Ouchhh Studio and secondary consultants fee packages and included information. Consultant fee packages to be included are: surveyors, civil, structural and services engineer/s, certifier, landscape architect (if applicable), cost consultants, safety in design, and all other necessary secondary consultants for project delivery. The two cost estimates are to be supplied at the conclusion of both the Feasibility Study and Concept Design phase and the Documentation phase. At this stage, a high-level cost estimate has been initiated for the Concept Design phase but not completed.
- Indicative project timelines including design, documentation, tender, construction / installation, and project launch and hand-over.
- A survey of appropriate and available building contractors and fabricators suitable to undertake construction of the art work is currently in progress.

The site nominated for the installation of Illuminate Adelaide Ouchhh public artwork is the southern portion of Wauwi / Light Square in Adelaide's CBD. The Illuminate team has presented an initial proposal to the City of Adelaide to support reports to Council for the scoping and Concept Design for the proposed work.

The Illuminate Adelaide Ouchhh public artwork is to be based on the current Ouchhh Studio Eye of Mexico Data w project and is to be a maximum of 8.7m high and 1.5m wide with the projection surface band running the full width internally. The size and scale of the artwork will be refined and finessed based on the Concept Design investigations and project team discussions, and in line with Council's requirements.

Skein are to work closely with the Illuminate Adelaide, City of Adelaide, and Ouchhh Studio teams, as well as the internationally recognised Arup Engineers civil, structural and services engineering team, to resolve overall formal resolution and design detailing.

The City of Adelaide, as the key project partner, will take on ownership of the permanent public art work once completed and integrate the project into the Adelaide Park Lands Sculptural Trail.

Durability and longevity will be key to determining material selections and detailing for the project and the Concept Design will clearly define parameters for ongoing maintenance, informed by the City of Adelaide's scheduling and associated budget.

Public safety will be a design priority, given the location of the artwork in a busy pedestrian and cycling park, as well as the proximity to vehicle traffic, and the design team will undertake a best practice approach to designing for public space with special consideration to the Adelaide Park Lands design guidelines.

SITE RATIONALE

ILLUMINATE ADELAIDE OUCHHH PUBLIC ARTWORK, WAUWI / LIGHT SQUARE

The Concept Design focuses on key site attributes that define Wauwi/Light Square's identity which fall into the categories of past and future heritage, audience engagement, and natural beauty, outlined below.

The Illuminate Adelaide Ouchhh public artwork aims to evolve and expand upon the presence of Colonel William Light's Monument by developing an art work that is both complimentary in scale and one that offers symmetry and balance to the axis and internal layout of Wauwi/Light Square.

The Illuminate Adelaide Ouchhh public artwork design utilises a halo form to frame Colonel William Light's Monument from the south Boulevard approach, drawing the eye towards a familiar and significant piece of Adelaide history.

Setting the digital component of the art work into the internal surface of the halo assists in achieving a slender edge band, that will not detract, but enhance the site vista from south to north and connect the contemporary nature of the Illuminate Adelaide Ouchhh public artwork to the SA Health and Bio-Medical Precinct built landscape beyond.

It is envisaged that the external surface of the halo will be clad in a mirrored material that will reflect the natural and built landscape to the east and west of the Illuminate Adelaide Ouchhh public artwork.

The simplicity of the form chosen for the Illuminate Adelaide Ouchhh public artwork offers a generous surface for the digital projection work whilst minimising the comparative impact of the large scale art work.

Wauwi/Light Square is a heavily trafficked pedestrian and vehicle route which will showcase the art work and selected City of Adelaide data set/s to a wide and varied audience, both day and night. The southern Morphett Street approach is also an approach for visitors to Adelaide's CBD heading to the likes of the Adelaide Oval and the Riverbank Precinct by car or on foot. The scale and animated nature of the Illuminate Adelaide Ouchhh public artwork aims to captivate the attention of an audience approaching at various speeds, in multiple directions, and from all distances.

The Illuminate Adelaide Ouchhh public artwork is proposed to be situated at the southern end of square. As such, the Illuminate Adelaide Ouchhh public artwork will retain a respectful distance from Colonel Light's Monument, as well as established trees, while enlivening a pocket of the Square which is in need of beautifying and upgrade.

Ouchhh Studio and Illuminate Adelaide are seeking approval by the City of Adelaide for the proposed artwork to be located in Wauwi/Light Square, Adelaide. The design team will develop the art work and its' sculptural nature to respond to the Adelaide Park Lands Management Strategy Objectives outlined below:

Adelaide Park Lands Management Strategy

Amazing Art: Deliver a program of public art across the Park Lands, including art trails and interactive artworks that encourage discovery, inspiration and play.

Skein to review in collaboration with City of Adelaide.

Respond to the following APLMS themes:

- Vibrancy – parks that are vibrant with activities and events.
- Connectivity – parks and places that are connected by paths and trails.
- Sustainability – parks where the natural environment is protected.
- Activation – parks with the facilities people need to stay longer and feel comfortable.
- Lighting – parks that are well lit for safe early morning and night time use.
- Public art – art for discovery, inspiration and play.
- Gardens and landscapes – a variety of gardens and landscapes.
- Valued Park Lands – respect and celebrate the value and heritage of the Park Lands.

Meet the following APLMS Objectives:

- Responsive.
- Iconic.
- Inclusive.
- Enriching.
- Resilient.

Achieve the following APLMS Objectives:

- Dynamic, active and tranquil places.
- Connected places and spaces.
- Welcoming and attractive places.
- Sustainable and enduring places.

PLANNING ZONES + OVERLAYS

SA PROPERTY + PLANNING ATLAS

The below information is taken directly from the South Australian Property and Planning Atlas and summarises relevant planning and zoning information the design team will respond to.

ZONES

Capital City - CC

OVERLAYS

- Airport Building Heights (Regulated) - All structures over 70 metres AHD
- *The Airport Building Heights (Regulated) Overlay seeks to ensure building height does not pose a hazard to the operation and safety requirements of commercial and military airfields.*

Airport Building Heights (Regulated) - All structures over 80 metres AHD

The Airport Building Heights (Regulated) Overlay seeks to ensure building height does not pose a hazard to the operation and safety requirements of commercial and military airfields.

Building Near Airfields

The Building Near Airfields Overlay seeks to ensure development does not pose a hazard to the operational and safety requirements of commercial and military airfields.

Design

The Design Overlay seeks to ensure significant development positively contributes to the liveability, durability and sustainability of the built environment through high-quality design.

Hazards (Flooding - Evidence Required)

The Hazards (Flooding - Evidence Required) Overlay adopts a precautionary approach to mitigate potential impacts of potential flood risk through appropriate siting and design of development.

Noise and Air Emissions

The Noise and Air Emissions Overlay seeks to protect new noise and air quality sensitive development from adverse impacts of noise and air emissions.

Prescribed Wells Area

The Prescribed Wells Area Overlay seeks to ensure sustainable water use in prescribed wells areas.

Regulated and Significant Tree

The Regulated and Significant Tree Overlay seeks to mitigate the loss of regulated trees through appropriate development and redevelopment.

VARIATIONS

Maximum Building Height (Metres)

Maximum building height is 53m

Concept Plan 79 - Primary Pedestrian Area

Minimum Building Height (Metres)

Minimum building height is 27m

OTHER CONSIDERATIONS EXTERNAL TO SAPPA - *expanded on later in the document.*

Adelaide Park Lands Management Strategy

Community Lands Management Plan

Park Lands Design Guidelines

ADELAIDE CONTEXT

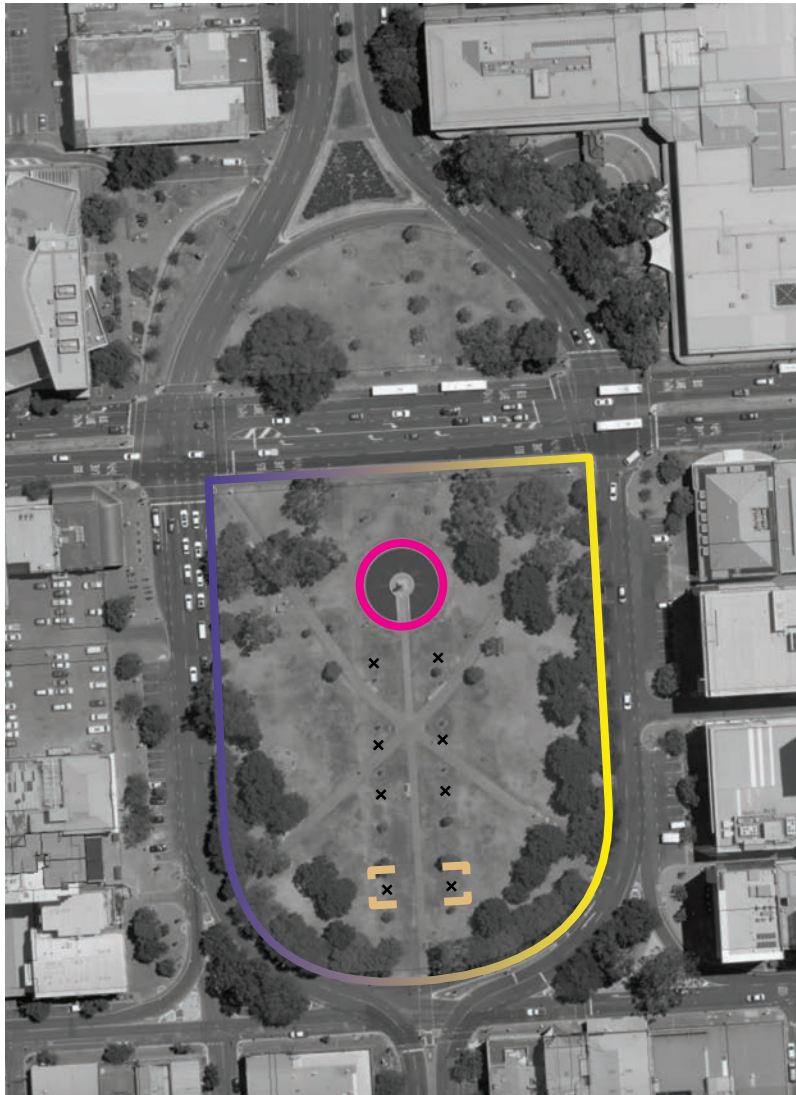
PROJECT LOCATION

PROPOSED PROJECT LOCATION
WAUWI / LIGHT SQUARE



SITE ANALYSIS

EXISTING FEATURES + PROPOSED ART WORK LOCATION



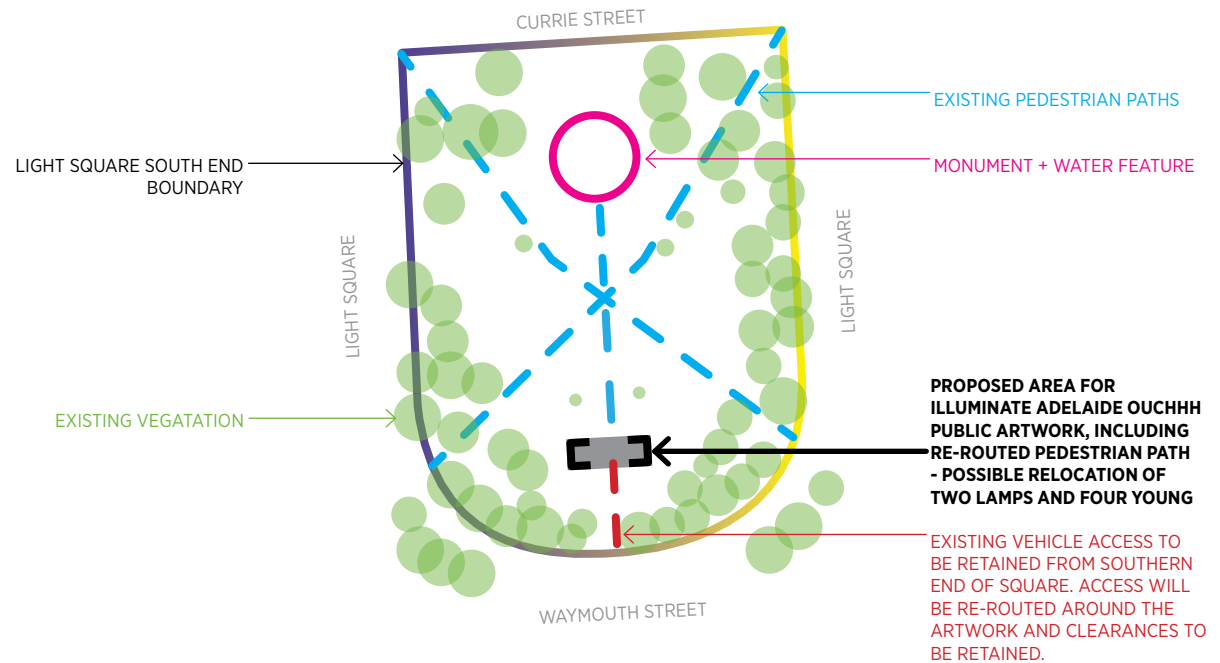
EXISTING BENCH SEATS



EXISTING LIGHT POLES



EXISTING PAVING



LOCATION PLAN

ARTWORK LOCATION + RELEVANT SITE FEATURES ON EXISTING SITE PLAN

ADVICE ON SUBSTITUTE TREE PLANTINGS

IF FOUR SOUTHERN CORYMBIA SP. ARE REMOVED, THEY SHOULD BE REPLACED WITH QTY. 2 TO 6 X 400L TREES IN STRATEGIC LOCATIONS ON AN AXIS ALIGNMENT AS IDENTIFIED ADJACENT. KEEPING WITHIN THE SQUARE'S FORMAL PLANTING DESIGN AND PRESERVING OPEN SPACE FOR FUTURE EVENTS.

DEPENDING ON EXACT LOCATION THE SPECIES SHOULD BE:

- CORYMBIA SP (TO MATCH EXISTING)
- FRAXINUS SP (TO MATCH EXISTING - OXYCARPA)
- JACARANDA SP (TO MATCH EXISTING - MIMOSIFOLIA)



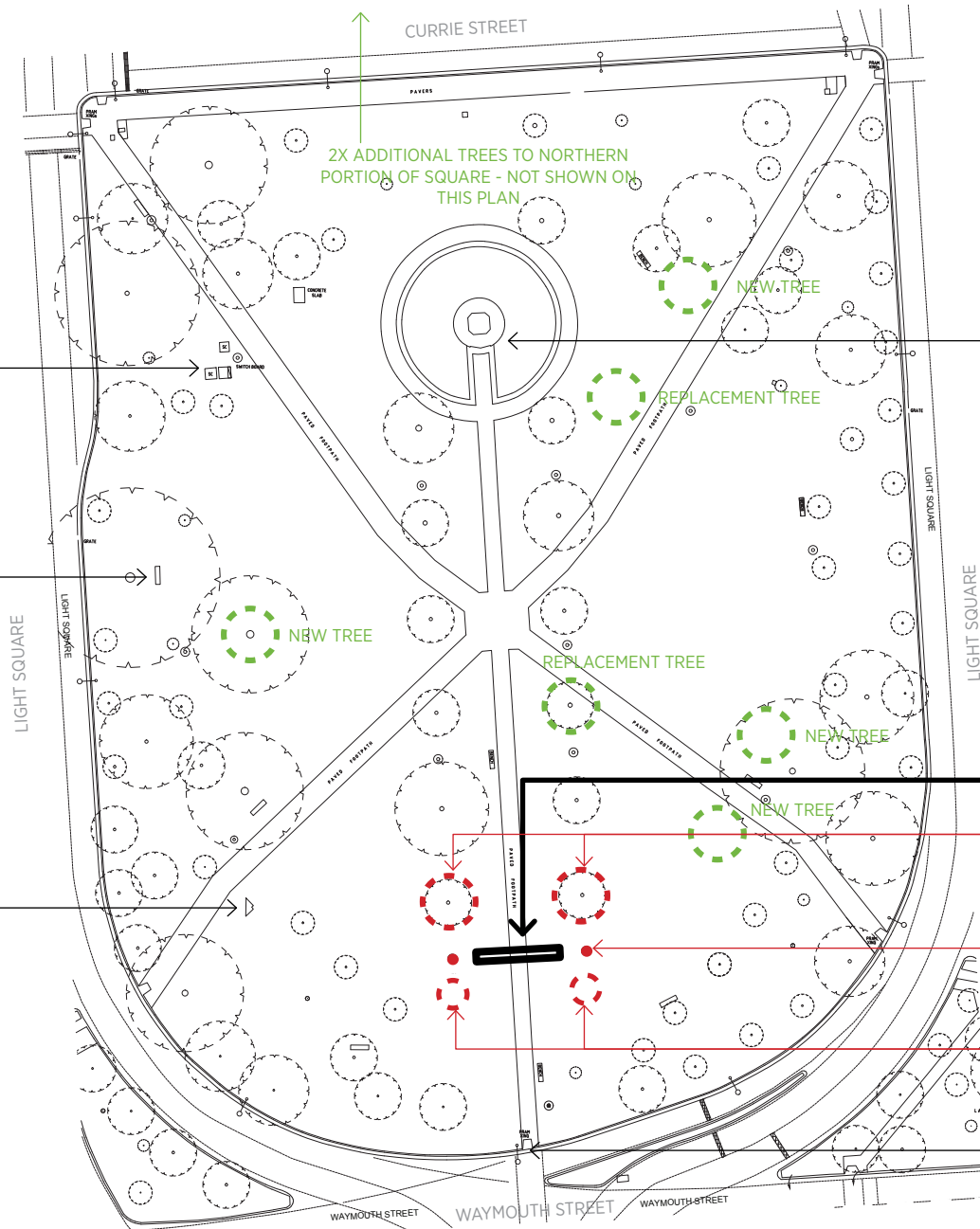
SITE TRANSFORMER



'THE ETERNAL QUESTION', BY RICHARD TIPPING



CATHERINE HELEN SPENCE BY LEVA POCIUS



RECOMMENDED LOCATION OF ADDITIONAL OR REPLACEMENT PLANTING



RECOMMENDED RELOCATION OF LIGHT POLE



RECOMMENDED RELOCATION OF LIGHT POLE



COLONEL WILLIAM LIGHT GRAVE AND MONUMENT

PROPOSED SIZE AND LOCATION OF ART WORK, DESIGNED TO AS 1428.1-2009 DESIGN FOR ACCESS AND MOBILITY - GENERAL REQUIREMENTS FOR PATHWAYS SURROUNDING THE ARTWORK - NEW BUILDING WORK.

RECOMMENDED RELOCATION OF TWO YOUNG EUCALYPTUS TREES TO NORTH OF PROPOSED ART WORK.

RECOMMENDED RELOCATION OF TWO LAMPS WITH A FOCUS ON ENHANCING PUBLIC LIGHTING AND PUBLIC SAFETY AND MOBILITY.

RECOMMENDED RELOCATION OF TWO YOUNG EUCALYPTUS SAPLINGS TO SOUTH OF PROPOSED ART WORK.

VEHICLE / PEDESTRIAN PATHS AUGMENTED TO DIRECT PEDESTRIANS AROUND ART WORK WHILE ALLOWING EVENT AND MAINTENANCE VEHICLE ACCESS.

ARTIST INTRODUCTION

ARTIST BIO + RELEVANT WORK

Ouchhh is a global creative new media studio with a cutting-edge innovator in the creative field who has been showing outstanding results in the art science technology scene for 10 years.

The Studio is a pioneer of data paintings and sculptures, a mind-driven approach, discovering new technological models to reflect the variety of context and experience that “the roots of art, science, and technology are mysterious”, that shape their futuristic perspective. The team currently consists of engineers, academics, creative coders, designers, media artists, motion graphic designers, and other talented individuals from a variety of fields with one synced vision that knowledge creates an epic public experience.

Ouchhh has a main office in Istanbul, and partnerships in LA, Vienna, Barcelona, Paris, London, and Berlin. They consider themselves to be a multidisciplinary creative hub focused on interactive new media platforms, data paintings, artificial intelligence, data-driven sculptures, kinetic public arts, immersive experiences, offering direction, art direction, and producing A/V architectural facade performances.

Ouchhh created approximately 52 public art projects for every continent such as Tokyo, New York, LA, Mexico, Seattle, Chicago, Miami, Abu Dhabi, Milano, Paris, Melbourne, Shanghai, Beijing, Washington DC, Montreal, São Paulo, Seoul, Roma, Moscow, Prague, Brussels, Hong Kong, Jakarta, Scotland, Singapore, Las Vegas, London, Barcelona, Berlin. Institutes such as Ars Electronica, Cern, Nasa, Google, Signal, iMapp, Mutek, Melbourne Light Festival, Singapore Art and Science Museum, Frost Miami Science Museum, SAT Société des arts technologiques Montreal, Canada National Space Center UK, American Indian Arts, Atelier Des Lumiere, LLUM Light Festival Barcelona and many more.

Studio works have received multiple accolades and awards in the international arena such as Reddot design Best of the Best Awards, German Design Award, Iconic Best of the Best Award, MUSE Awards (USA) 10th Annual IDA Awards (The International Design Awards) LA, Asia Design Award (Seoul) and ADC Awards (The Art Directors Club) NY, CODAwards, AVIXA Awards (Las Vegas).

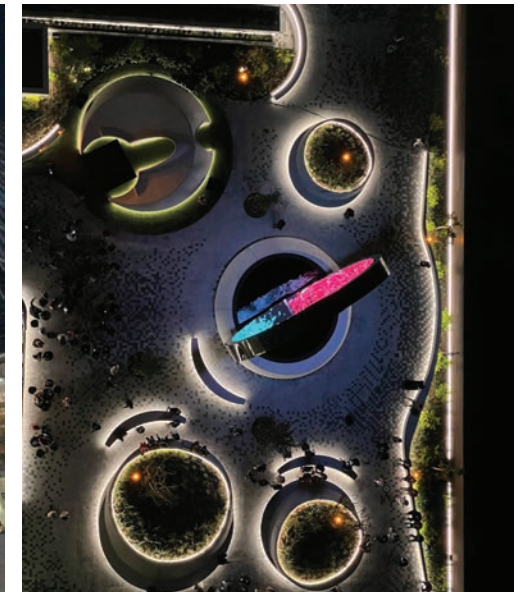
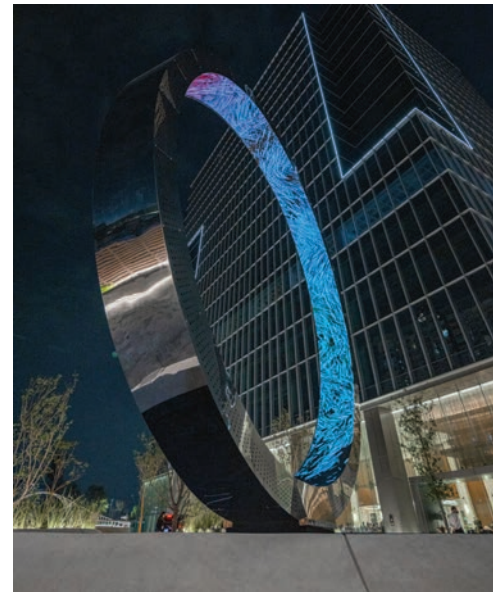
<https://ouchhh.tv/INFO>

Relevant work

The recently realised artwork entitled Eye of Mexico (see following page) is a comparable artwork of scale to the proposed Ouchhh Sculpture.

The Eye of Mexico is a dynamic work that transports us to the future of mobility in Mexico. It also highlights the importance of Neuchâtel Cuadrante Polanco’s real estate development project as a turning point in the urban evolution of the Nuevo Polanco area, as well as a statement of art and technology, both for residents and visitors. The art piece will surely become a sought-after community destination that will be displayed regularly to create a meeting point and enhance the allure of the plaza.

MASSIVart and MIRA commissioned the acclaimed visual artist and Creative Director of the award-winning Ouchhh art collective, Ferdi Alici, to create this piece. “The Eye of Mexico” will contain demographic, urban and mobility data for Mexico, thus showcasing the neighbourhood’s dynamism and acting as a kind of portal towards the future of cities and of Mexico City itself. Collaboration with MASIVart + MIRA.



Concept imagery from the Eye Of Mexico project

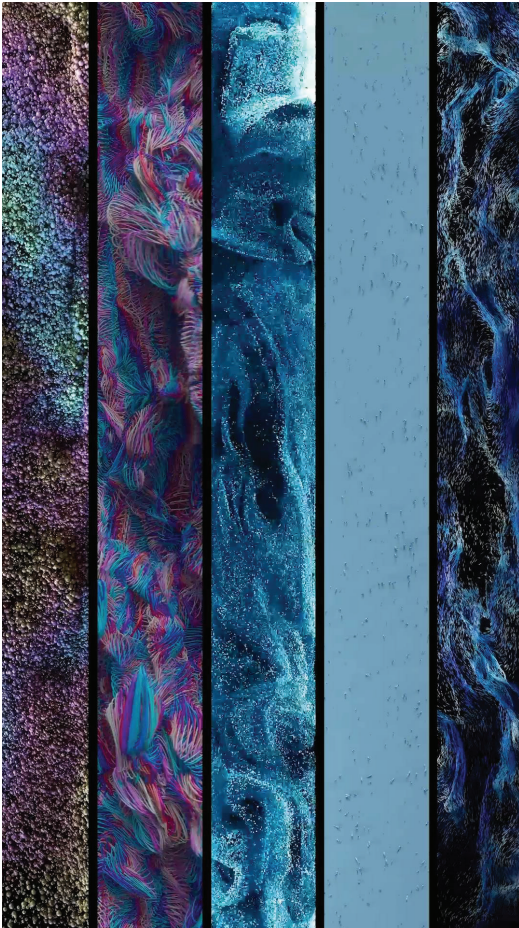
ARTIST'S CONCEPT FOR THE OUCHHH PUBLIC ARTWORK

PROJECTION IMAGERY + SIMILAR, PROPOSED FORM

Projection imagery concept

Ouchhh's concept is for City of Adelaide data to be utilised for the digital screen imbedded into internal surface of the art work. Current discussions are that the focus of the data set utilised will be sustainability-driven and derived from City of Adelaide initiatives and infrastructure.

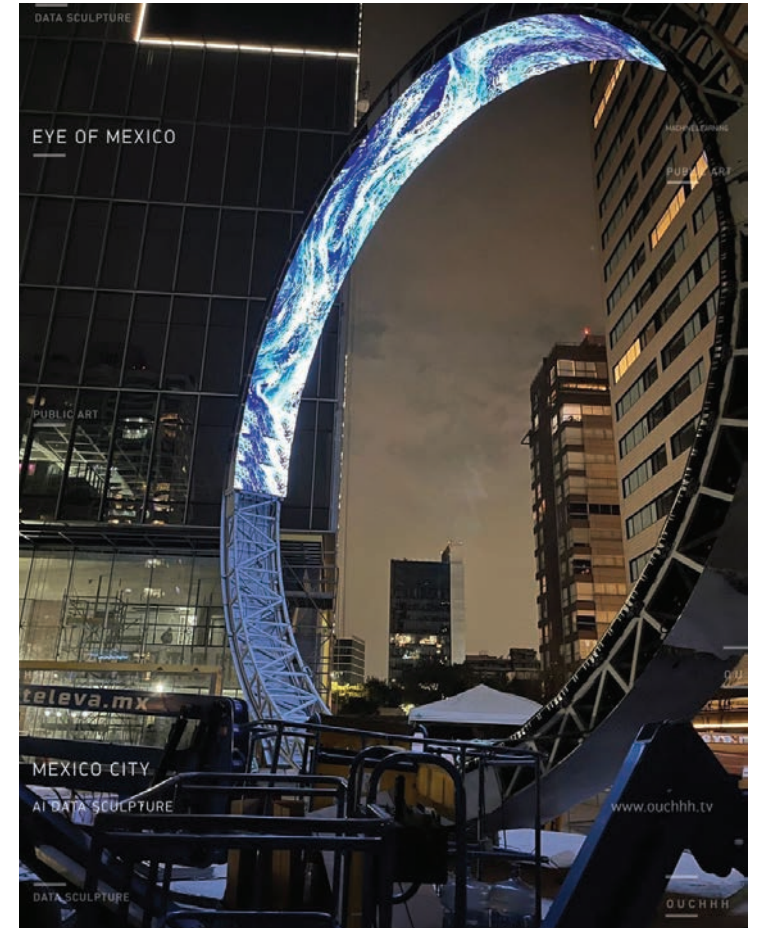
'Ouchhh's main goal is not just to create an iconic landmark but also to create a data-driven public art to inspire and create a sense of marvel to everyone who experiences it through awe-inspiring arts.', Ouchhh Studio.



Concept imagery for internal digital projection surface



Progress images of the Eye of Mexico installation.



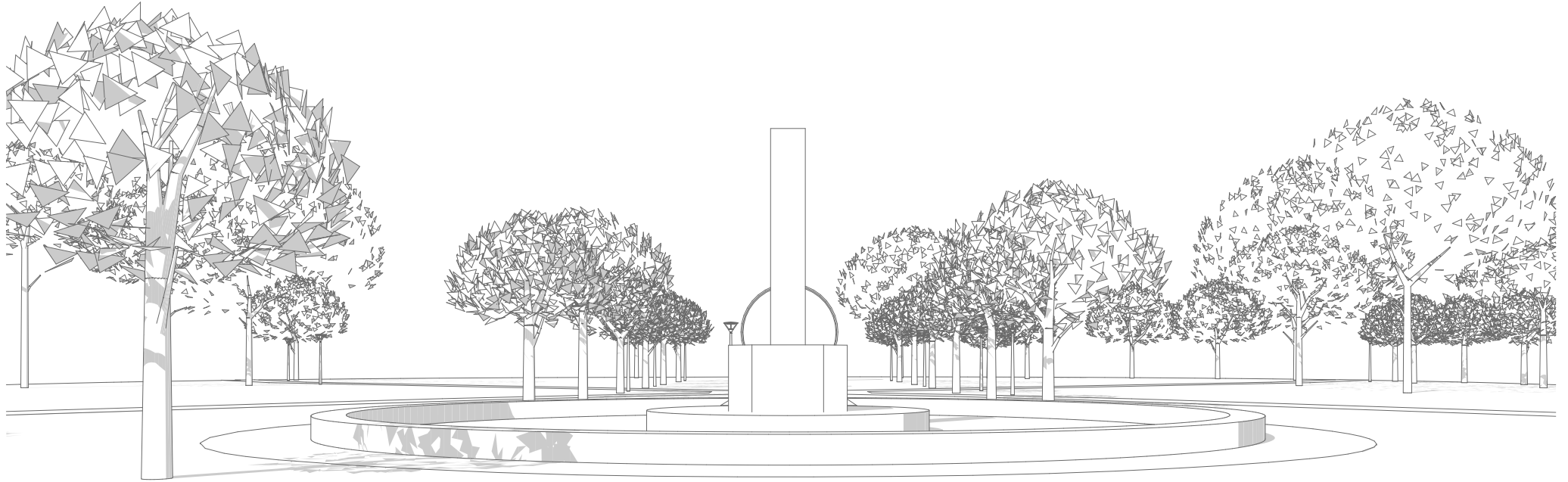
CONCEPTUAL VIEW

WAYMOUTH STREET, SOUTH APPROACH



CONCEPTUAL VIEW

CURRIE STREET, NORTH APPROACH



MATERIALS + FINISHES

SELECTIONS



Landscaping

Indicative finish to plinth - light concrete finish.



Landscaping

Sensitive to existing site conditions - reinstate new red brick herringbone pathways and grass. Designed to AS1428 Design for Access and Mobility.



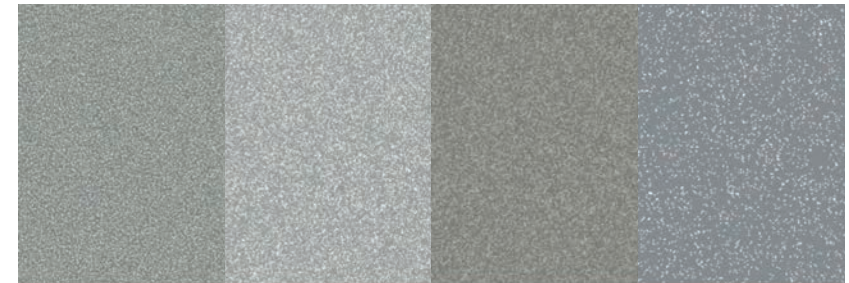
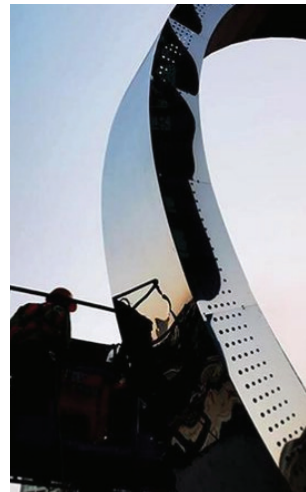
Projection imagery

Digital surface to be durable, tamper-proof and I.P rated. Designed and detailed to Australian Standards.



Cladding of structure

Indicative finishes options - reflective quality with level of reflectiveness to be developed during early design phase. Designed and detailed to Australian Standards.



DURATEC ETERNITY
CHAIN PEARL
MATT
90T7761Q

DURATEC ETERNITY
CITI SILVER PEARL
MATT
90T7024Q

DURATEC ETERNITY
PEWTER PEARL
SATIN
90T7764Q

DURATEC ETERNITY
SILVER KINETIC PEARL
SATIN
90T7160K

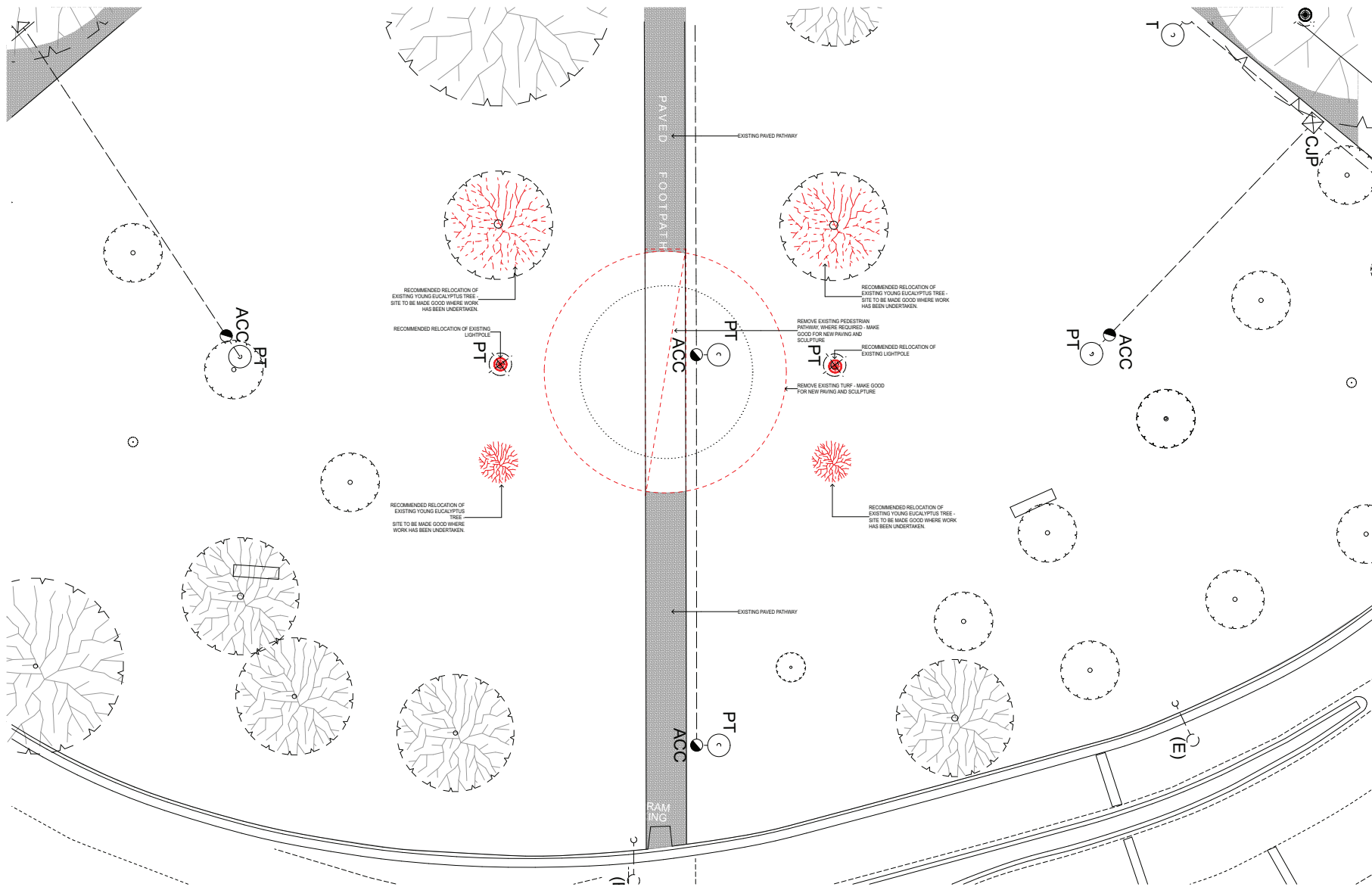


Powdercoat finish to exposed steel structure

Indicative finish - reflective quality to compliment cladding of structure.

SITWORKS PLAN

ART WORK + IMMEDIATE LANDSCAPE

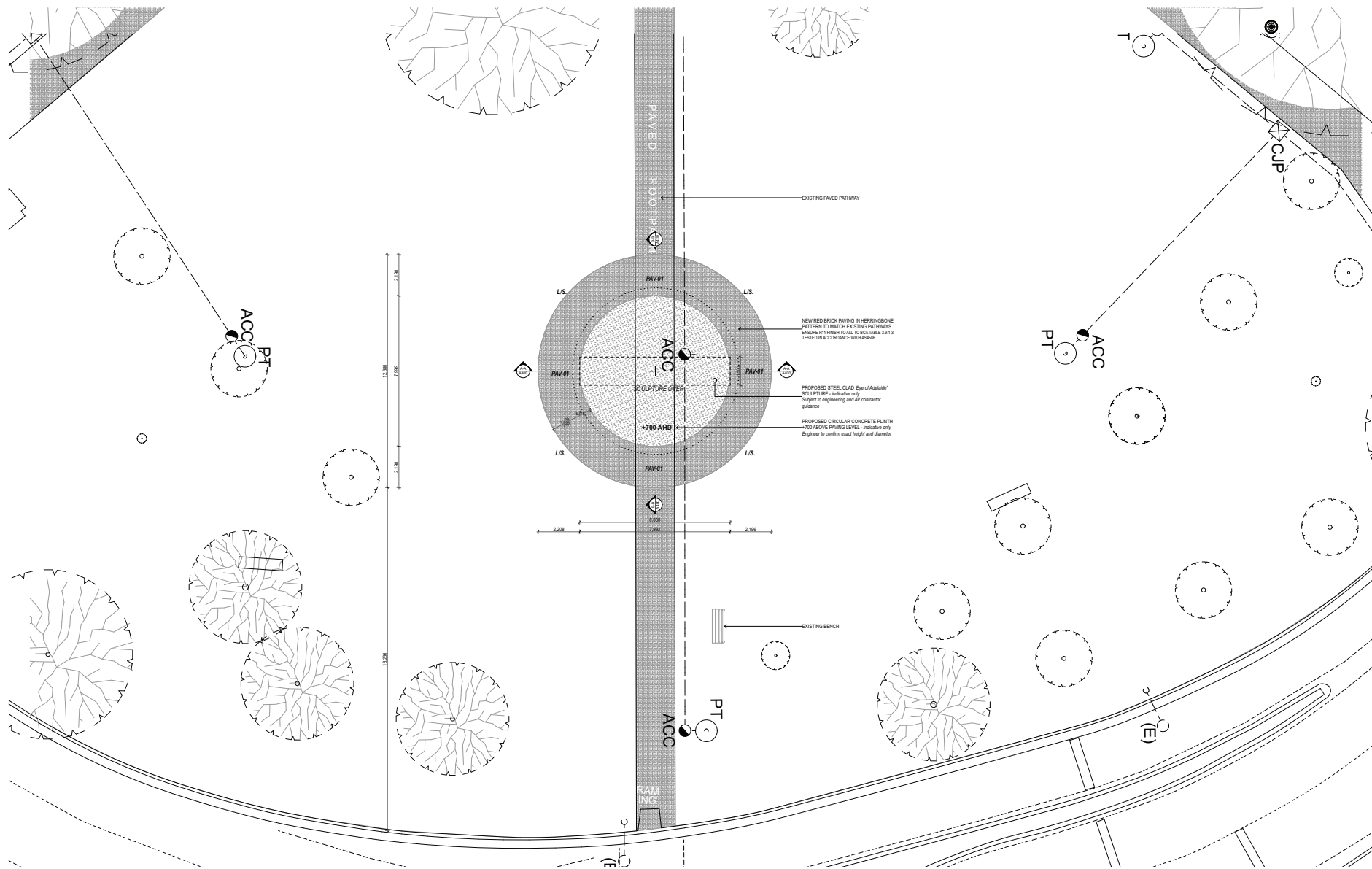


SITE WORKS NOTES

1. REMOVE ALL EXISTING CONSTRUCTIONS AND FINISHES NECESSARY FOR THE COMPLETION OF THE WORK AS DEPICTED ON THE DRAWINGS, INCLUDING BUT NOT LIMITED TO, ITEMS SHOWN ON THE PLANS WITH DASHED LINES.
2. CONTRACTOR IS RESPONSIBLE FOR CONTACTING DIAL BEFORE YOU DIG SNT IN ACCORDANCE WITH REGULATIONS.
3. CONTRACTOR TO ADHERE TO SAPW WORKING IN THE VICINITY OF SAPW INFRASTRUCTURE: (Meters Access Permit Process - 2015)
4. CONTRACTOR TO ADHERE TO SAFEWORK SA, EXCAVATION CODE OF PRACTICE
5. CONTRACTOR TO SURVEY FOR SUBSURFACE SERVICES: NOT LIMITED TO: SEWER, ELECTRICAL, GAS PIPEWORK, NBN SHALL BE INCLUDED.
6. MAKE GOOD READY FOR NEW CONSTRUCTION IN ACCORDANCE WITH THE CONTRACT DRAWINGS.
7. CONTRACTOR IS DESIGNATED TO MAKE REMOVALS. DISPOSITION OF MATERIALS IS THE RESPONSIBILITY OF THE CONTRACTOR. VERIFY WITH ADELAIDE CITY COUNCIL. THE DISPOSITION AND REMOVAL OF ANY COMPONENTS OF SALVAGEABLE VALUE.

SITE PLAN

ART WORK + IMMEDIATE LANDSCAPE



SITE NOTES

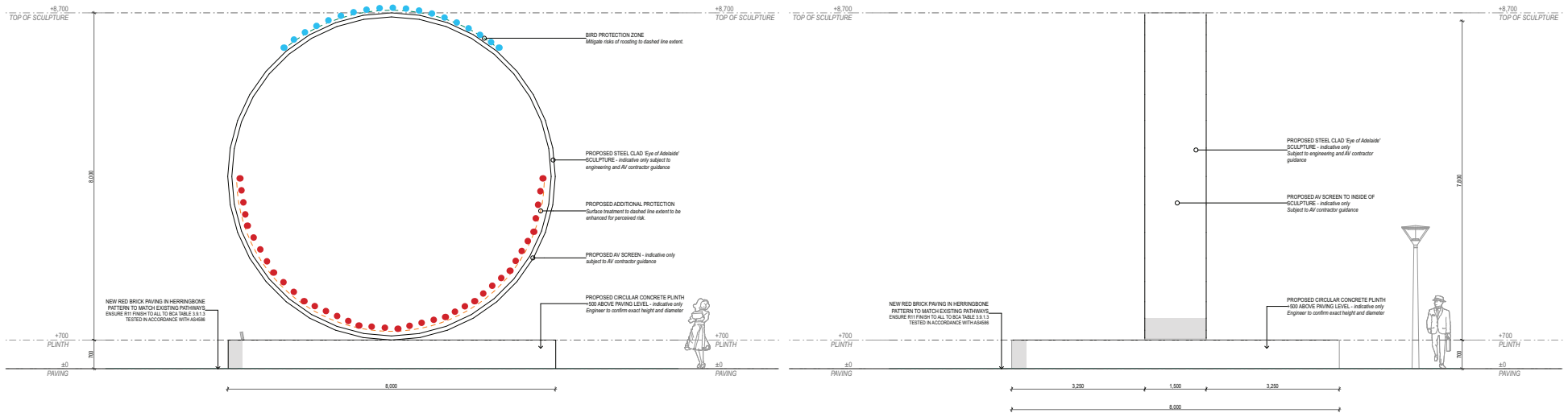
- 1. EXISTING LEVELS SHOWN ARE FOR REFERENCE ONLY. REFER ALWAYS TO SURVEYOR'S DRAWING FOR FULL DETAILS OF EXISTING LEVELS.
- 2. REFER TO CIVIL ENGINEER'S DRAWINGS AND DETAILS FOR ALL BUILDING FINISHES, SITE LEVELS & CIVIL REQUIREMENTS.
- 3. ALLOW TO ARRANGE & COORDINATE WITH ALL SERVICE AUTHORITIES FOR ALL ELECTRICAL & COMMUNICATIONS CONNECTION REQUIREMENTS (NEW & ALTERATIONS) CLIENT TO PAY ALL AUTHORITIES FEES.
- 4. CONTRACTOR TO USE SURVEY DATA AND LEVELS FOR SETOUTS.
- 5. CONTRACTOR TO ENSURE USE OF TEMPORARY FENCING COMPLIANT WITH THE REQUIREMENTS OF AS1936.1

SITE LEGEND

- L.S. - LANDSCAPING - BUILDER TO CLEAN LANDSCAPING AREA TO 300MM DEEP AND REMOVE DEBRIS. PROVIDE 200MM DEEP LAMM AND NEW TURF TO ACC GUIDELINES.
- PRM - RED BRICK HERRINGBONE PAVING TO MATCH EXISTING COUNCIL PAVING. NEW RED BRICK PAVING IN HERRINGBONE PATTERN TO MATCH EXISTING PATHWAYS ENSURE R11 FINISH TO ALL TO BCA TABLE 5.8.1.3 TESTED IN ACCORDANCE WITH AS4686.

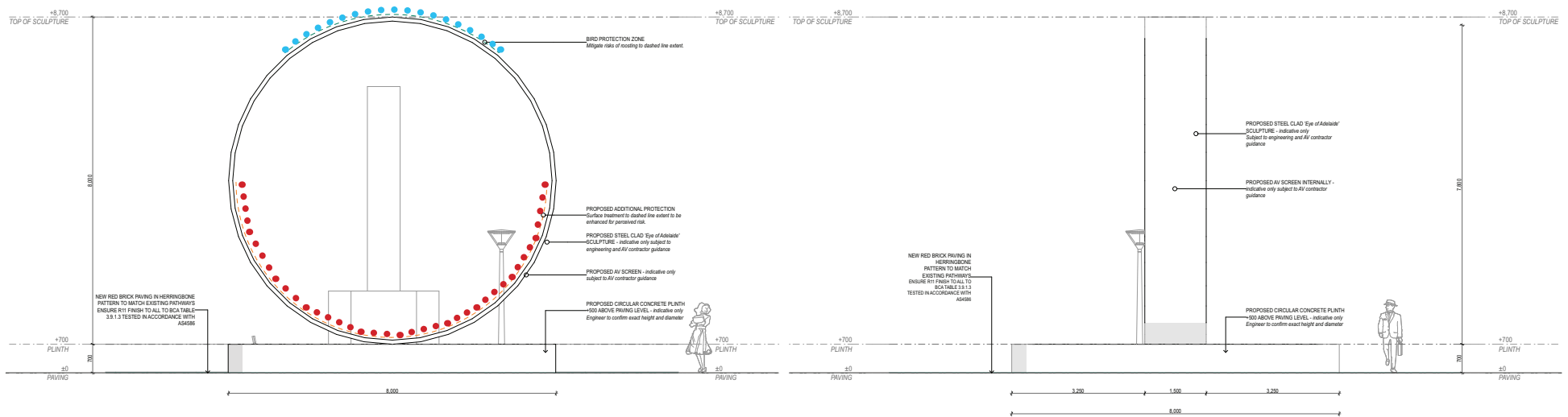
ELEVATIONS

NOT TO SCALE



NORTH ELEVATION
1:50

EAST ELEVATION
1:50

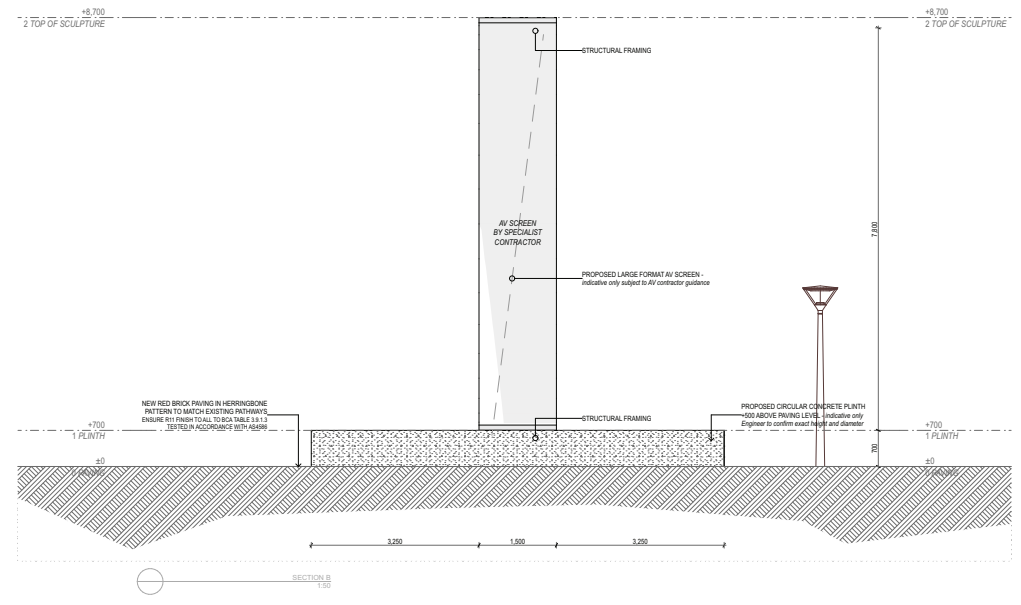
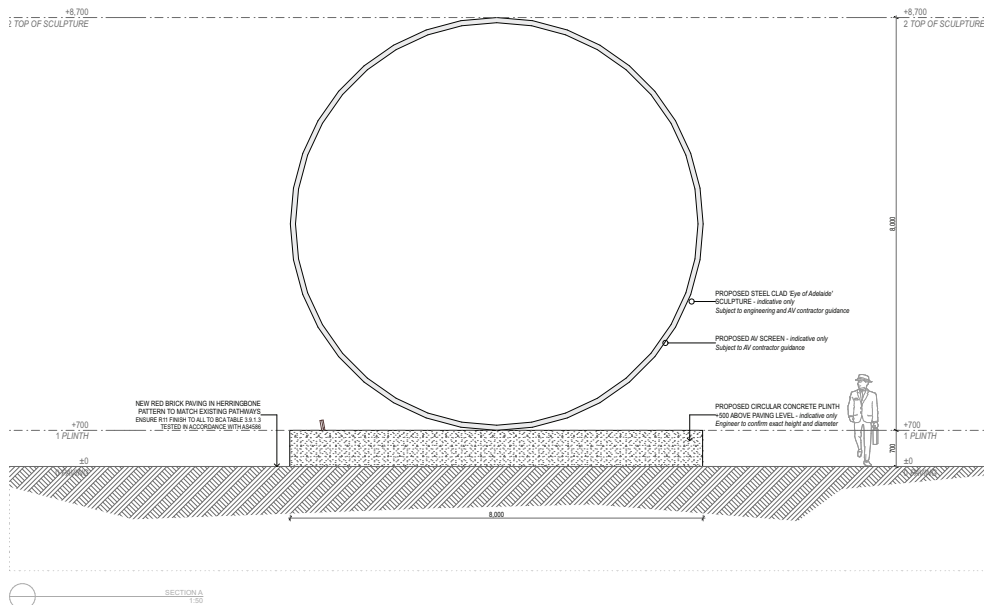


SOUTH ELEVATION
1:50

WEST ELEVATION
1:50

SECTIONS

NOT TO SCALE



RISK ASSESSMENT

CONSIDERATIONS + CONSTRAINTS

In assessing risk, the design team will engage with expert consultants, including international engineering firm Arup, and with the City of Adelaide to mitigate risks associated with perceived, possible public interaction with the proposed art work. Public interaction that the design team will address in design development will include sitting, standing, walking, running, skateboarding, e-scooters, bicycles, and objects thrown at surface, at a minimum.

The following outlines the approach to specific considerations in more detail:

General maintenance

The project team will design first and foremost with durability in mind considering the location of the art work and surrounding site conditions.

Materials will be selected that are fit for purpose, have low maintenance requirements, and resistance to tampering and vandalism/graffiti.

The City of Adelaide have informed the design team that art works over 3.5m high require specialised elevated access for routine maintenance. As such, an allowance is to be made for a clear trafficable area around the art work for use by specialised vehicles. The team is to be advised by the City of Adelaide on specific vehicle requirements in regards to weight and height that will inform clearances and site/paving compaction.

Ouchhh's detailing of the digital screen element will inform the City of Adelaide's maintenance schedules with prospective annual ongoing costs and refurbishment, including condition assessment timings.

The City of Adelaide's internal project team will provide advice relative to general cleaning of the art work structure, plinth, and immediate landscape. The design team will offer advice regarding the technology, hardware and software upkeep, based on specialist consultant feedback and the artist's software requirements.

Site services

— Pathway lightpoles line the path currently identified for the Illuminate Adelaide Ouchhh public artwork location and two current lightpoles will require removal and relocation pending the approval of the final position of the Illuminate Adelaide Ouchhh public artwork.

Existing vegetation

— Current vegetation across the site consists of established trees along dedicated pathway axis and around the Wauwi/Light Square boundary with estimated 6m to 15m canopy heights.

— Eucalyptus saplings line the path currently identified for the Illuminate Adelaide Ouchhh public artwork location and four of the saplings will require relocation or substitution, pending the approval of the final position of the Illuminate Adelaide Ouchhh public artwork and on advice of the City of Adelaide team.

— As well as substituting the trees directly affected by the installation of the artwork, additional plantings are proposed for strategic locations around the square, as outlined on the Location Plan within this document.

Vehicle safety and light levels

— The design team will be mindful of Roadside Guidelines and Lighting Standards relevant to adjacent site traffic and light level analysis. Consultation with specialist consultants and/or a traffic engineer will be undertaken to ascertain appropriate lux levels.

Public events

— The project team will consider maintenance and event vehicle access as well as loading/unloading points when locating the art work. Advice from the City of Adelaide in terms of type of vehicles that will require site access as well as location of event infrastructure will be crucial in determining the exact location of the art work.

— General public safety in regards to public events and the proximity to the Illuminate Adelaide Ouchhh public artwork will be interrogated to inform best practice decisions and detailing for the final design.

Safety in Design

— Public safety will be a key consideration during the development of the project parameters and passive surveillance requirements for public safety, to meet the Adelaide Park Land's guidelines. The design team's approach to passive surveillance will be to provide good visual connection from the art work to the street and to not create any enclosed or hard to see pockets of space within the overall art work form.

— Lighting is a key feature of the art work itself and the integration of existing pathway lighting will be undertaken in coordination with the City of Adelaide as well as specialist consultants to achieve a result that enhances the experiential nature of the art work as well as public safety.

— Climability will be addressed by exploring the most suitable connection between the art work and the natural ground. The project team will take an approach of deterrence and detail the art work structure to be durable and fit for this specific public location.

— Design to building and public open space standards that will offer Council the level of comfort required for managing risk associated with the art work and possible damage.

— Work with civil, structural, and services engineers to determine best practice building systems and material selections that reflect the public Park Lands environment and considerations in regards to events and nightlife.

RISK ASSESSMENT

CONSIDERATIONS + CONSTRAINTS - CONTINUED

General selections

The inclusion of a traffic-able component of the design will be investigated to mitigate public possible interaction. The early options for traffic-able surfaces that will be investigated are:

1. Structural glass floor and the rationalisations associated with a permanent protective layer.
2. Sacrificial clear skin applied to surface of digital screen component that, once scratched or damaged, can be replaced immediately or during City of Adelaide's scheduled maintenance.
3. Landscaped design to deter human interaction/movement via rock or stone edging to plinth surrounds.
4. All or some of the above combined.

— The design team has concluded early on that a traffic-able design solution is preferable and will investigate and develop that approach as a starting point.

— Arup engineers have flagged that traffic-able glass as a protective surface to the digital screen will be more costly and possibly outside of the current budget, however, this option will nonetheless be investigated and tested in early cost estimates, as a preference.

— The design team has discussed the possible option of a 'sacrificial layer' applied to the digital screen surface that would require replacing once considerable damage has taken place that affects the quality and legibility of the digital art work component.

Detailing

— The design will aim to mitigate the ingress dust between skin and LED by sealing the connection point between the digital screen component and the external cladding element.

— Cladding and edge detail options will be explored to resolve mitigation for the deterrence of bird roosting, pigeon/duck seating.

— The plinth between the natural ground and the art work will be designed for deterrence and will act as a cautionary device to mitigate public interaction with the art work at the ground plane/landscape level.

— The detailed design will consider and manage maintenance of permeable ground. For instance, the design team is considering the introduction of a continuous rock/stone edging to the red brick paving abutting the plinth to help with both the amount of permeable ground and deterrence.

Structure and cladding

— It is envisaged that the art work will be design in component segments that will be sized to relate to transport, fabrication, and structural efficiencies.

— All structural steel members are to be hot-dip galvanised to provide robust and lasting anti-corrosive qualities and will be considerate of transport and locally available galvanising bath sizes.

— Panel cladding will be detailed to cover and completely enclose/seal the structural system. The selected cladding will be of a quality that perform at top order in a public setting and requires minimal maintenance.

— Appropriately fire-rated cladding materials will be selected.

— The digital screen component of the art work, and all other required mechanical services will be IP65 rated.

— Appropriately fire-rated digital screen technology will be selected.

Initial engineering and site investigations

— The City of Adelaide have supplied an initial Dial-before-you-dig assessment which has been used to determine the proposed location for the art work. Upon progressing the Concept Design, the design team will obtain a non-invasive geotechnical investigation to determine below-ground site conditions to mitigate risk associated with stability of the soil and site contamination.

— Arup to conduct preliminary wind analysis to determine base member sizing.

— Skein to coordinate a geotechnical investigation on site informed by Arup's geotechnical briefing document.

Completion and compliance

— The City of Adelaide are aware that they are taking ownership of an art work that can potentially be damaged by public nuisance and the design team has had early discussions with the City of Adelaide project team to determine insurable risks which will inform design detailing and material selections moving forward.

— The City of Adelaide has stipulated the requirement for a 12 month Defects Liability Period clause in the construction contract.

— All engaged contractors will be licensed and insured and all materials used will be compliant with the City of Adelaide handover requirements and defects liability period.

REFERENCE DOCUMENTS

RELEVANT STANDARDS + GUIDELINES

The Ouchhh Public Artwork will adhere to the following standards, National Codes guidelines, and action plans.

Australian Standards - to reference at a minimum

- AS 1428.1-2009 Design for access and mobility-General requirements for access - New building work
- AS/NZS 1428.4.1-2009 Design for access and mobility - Means to assist the orientation of people with vision impairment - Tactile ground surface indicators
- AS 1562.1-2018 Design and installation of metal roof and wall cladding , Part 1- Metal
- AS 2312.1-2014 Guide to the protection of structural steel against atmospheric corrosion by the use of protective coatings - Paint coatings
- AS 2904-1995 Damp-proof courses and flashings
- AS 3600-2018 Concrete structures
- AS 4100-1998 Steel structures
- AS 4120-1994 Code of tendering
- AS 4122-2010 General Conditions of Contract for Consultants
- AS 4654.1-2012 Waterproofing membranes for external above-ground use - Materials
- AS 4654.2-2012 Waterproofing membranes for external above-ground use - Design and installation
- AS 4970-2009 Protection of trees on development sites
- AS/NZS 1170.0-2002 Structural design actions - General principles

National Construction Code

NCC - Building Code of Australia, Volume One.

- Class 10 building classification. To be confirmed by Certifier.

NCC - Building Code of Australia, Volume One.

Community Lands Management Plan - General Provisions

Temporary works and compounds

Under section 202 of the LG Act, temporary works and compounds on the Park Lands are permitted only where the use is for the purpose of constructing, improving or maintaining infrastructure on the Park Lands. These must:

- adhere to the requirements of City of Adelaide lease and permit conditions.
- be limited to the duration of the project.
- be restricted to one hectare or less to minimise public exclusion.

- provide safe and convenient alternatives to any disrupted public movement patterns.
- minimise impacts from any use or associated use and rehabilitate the site as required.
- not impact on trees and particularly biodiversity areas.
- restrict vehicle access and parking to those necessary to support construction works.
- receive planning consent if necessary.
- be for the purposes of CoA or State or Federal Government instrumentalities or those acting on their behalf.

Public Art and Memorials

Provide opportunities for the development of permanent and temporary public artworks and memorials across the Park Lands, including art trails and interactive installations, as unique attractions that encourage exploration and creative engagement.

Public Art Action Plan

The three-year Public Art Action Plan celebrates Adelaide's status as a leading global Creative City. The Plan builds on Adelaide's rich collection of sculptures, installation and commemorative monuments, celebrates the public art traditions and living culture of Aboriginal and Torres Strait Islander people and recognises the artistic traditions from around the globe. The Plan is ambitious to enrich both our community and influence creative expressions to enable bold, future-focused and ambitious public art.

The goals for the Public Art Action Plan are:

- Adelaide is a must visit destination, renowned for its playful, thought provoking, unexpected and world-class art experiences
- Adelaide's public art celebrates its rich and vibrant Aboriginal and culturally diverse identities
- Adelaide is a world leading city of art that tells the story of the past and connects the future, reflecting the growth and evolution of the city
- Adelaide builds capacity, works corroboratively, forms partnerships and advocates for art that invigorates the built environment and urban landscape.

REFERENCE DOCUMENTS

RELEVANT STANDARDS + GUIDELINES - CONTINUED

The Illuminate Adelaide Ouchhh public artwork addresses and responds to the following criteria of the CLMP:

Community Lands Management Plan - Chapter 17

Wauwi/Light Square

Management directions:

- 1.3.1 Enable appropriate activities and events in the square.
- 1.3.2 Support activities that contribute to high quality spaces ranging from major events to quiet refuges.
- 1.3.3 Support use of the Square for informal recreation and events.
- 1.3.4 Conserve, enhance, and interpret the identified Cultural Heritage Landscape and its contributory features.
- 1.3.5 Retain and strengthen distinctive mature tree species.
- 1.3.6 Retain and strengthen the heritage significance of the Colonel William Light Grave and Monument.
- 1.3.7 Ensure lighting, furniture, paving, and planting maintain the formal urban garden character of the Square.
- 1.3.8 Enhance the Square through creative design and distinctive features that broaden its appeal and use.
- 1.3.9 Retain existing spatial layout and pathway alignments, which are part of the cultural heritage value of the Square but seek to redesign the layout of the Square to incorporate the four corners into the green space.
- 1.3.10 Ensure planting in the Square is highly designed and structured responding to the urbanised nature of the Square's location.
- 1.3.11 Maintain the Square to a high level of design and maintenance to recognise it's importance to the urban life of Adelaide.
- 1.3.12 Support opportunities to improve the connection of the Square with the Park Lands.
- 1.3.13 Maintain and enhance the views and vistas to the skyline and the Adelaide Hills through carefully planned tree planting and spatial arrangements to reinforce the structured urban garden character of the Square.
- 1.3.14 Minimise parking around the Square.
- 1.3.15 Seek opportunities to reduce bitumen in and around the Square and integrate possible services or transport systems into the environment.

PROJECT TIMELINE

BREAKDOWN OF PROJECT PHASES

